

08615

08615

DATED October 18th, 1972

1973 JAN 18 File 3 11

08615

No. Received in the Office of Land Titles at Brampton at 2:11 P.M. on the 18 day of Jan 1973 and entered in Cases & Titles Index

Parcel Section PEEL COND PLAN No. 27

Master of Titles

HS 11 2/2

AS

PEEL CONDOMINIUM CORPORATION NO. 27

BY-LAW No. 2

Shiff, Gross, Solicitors,  
Barristers & Solicitors,  
70 Bramalea Road,  
BRAMALEA, Ontario.

FRONT PAGE  
REGISTRY

08615

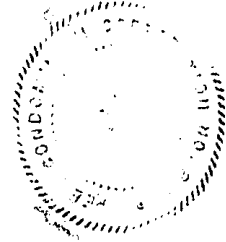
CERTIFICATE

THE UNDERSIGNED Secretary of Peel Condominium Corporation No. 27  
HEREBY CERTIFIES that the By-law attached hereto was made in accordance with  
the Condominium Act, 1970 Statutes of Ontario, Chapter 77 and any Amendments  
thereto the Declarations and By-laws of the Corporation.

DATED at Bramalea this 18th day of October, 1972.

PEEL CONDOMINIUM CORPORATION NO. 27

Per: *M.M. Cook* R.C.  
Secretary



A BY-LAW MADE BY PEEL CONDOMINIUM CORPORATION NO. 27, the 18th day of October, 1972.

BE IT ENACTED as a By-law of Peel Condominium Corporation No. 27 as follows:

1. Each unit owner shall have the exclusive use of the patio adjoining and attached to the rear of the respective unit of each unit owner in accordance with the provisions of the Declaration and By-laws.
2. Each unit owner without an attached garage shall have the exclusive use of one (1) parking space as set out in Schedule "A" hereto attached and diagrammatically shown on Schedule "B" hereto attached in accordance with the provisions of the Declaration and By-laws.
3. Each unit owner with an attached garage shall have the exclusive use of the driveway referred to as "D" on Schedule "B" and which gives direct access to that unit provided where the driveway gives access to adjoining units, the exclusive use shall be as to one half of the driveway.

THE FOREGOING BY-LAW is hereby made by Peel Condominium Corporation No. 27.

DATED at Bramalea this 18th day of October, 1972.

PEEL CONDOMINIUM CORPORATION NO. 27

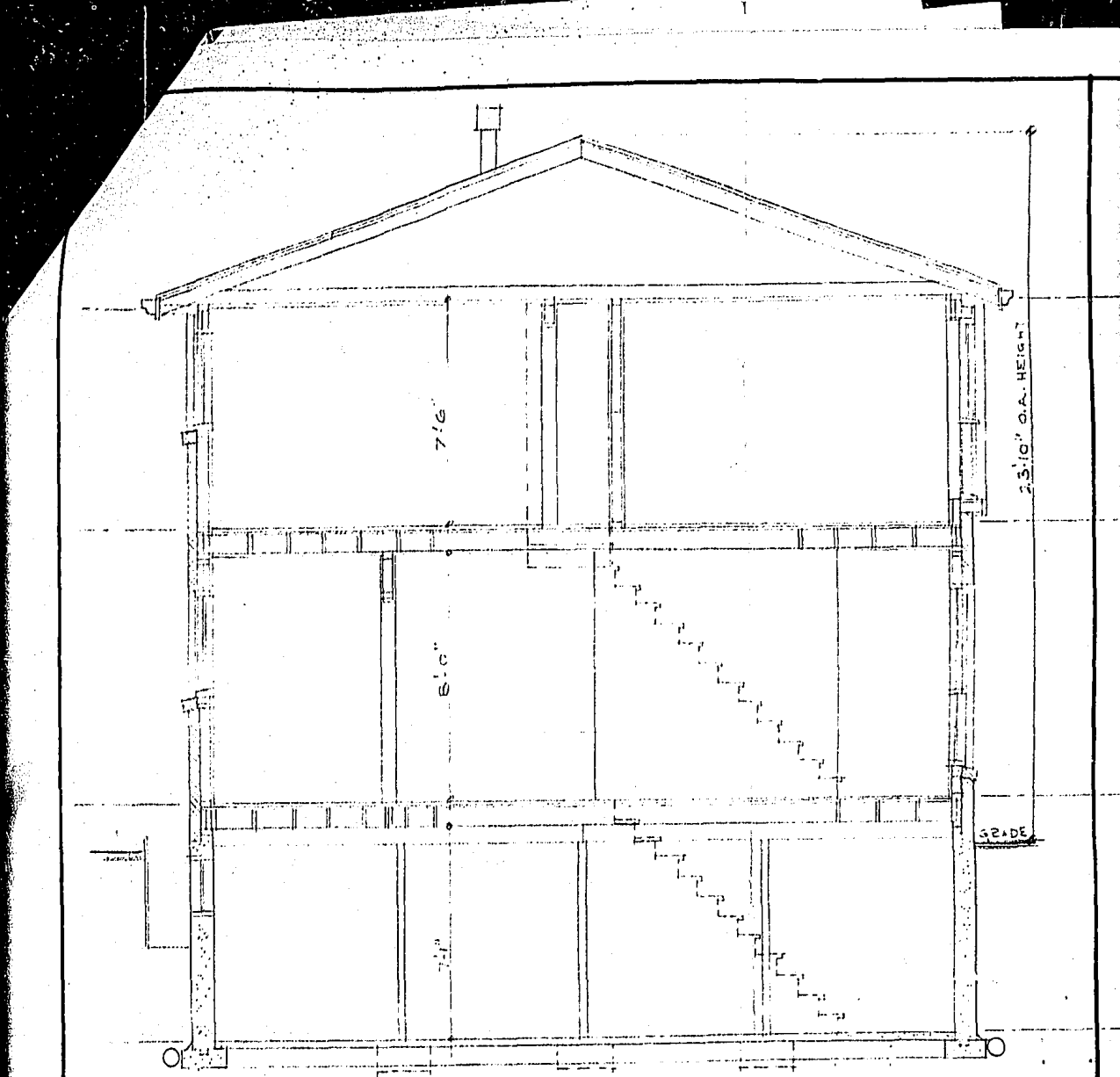
Per: [Signature] SD  
PRES.

Per: [Signature] RC  
SEC.

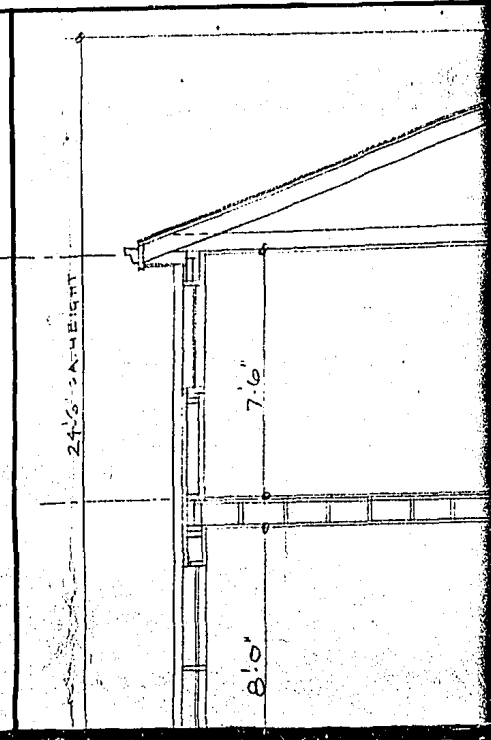
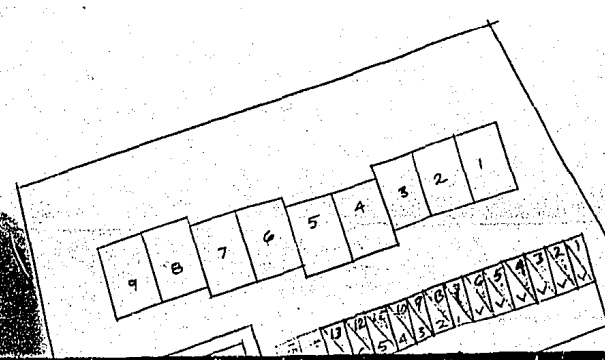
SCHEDULE "A"

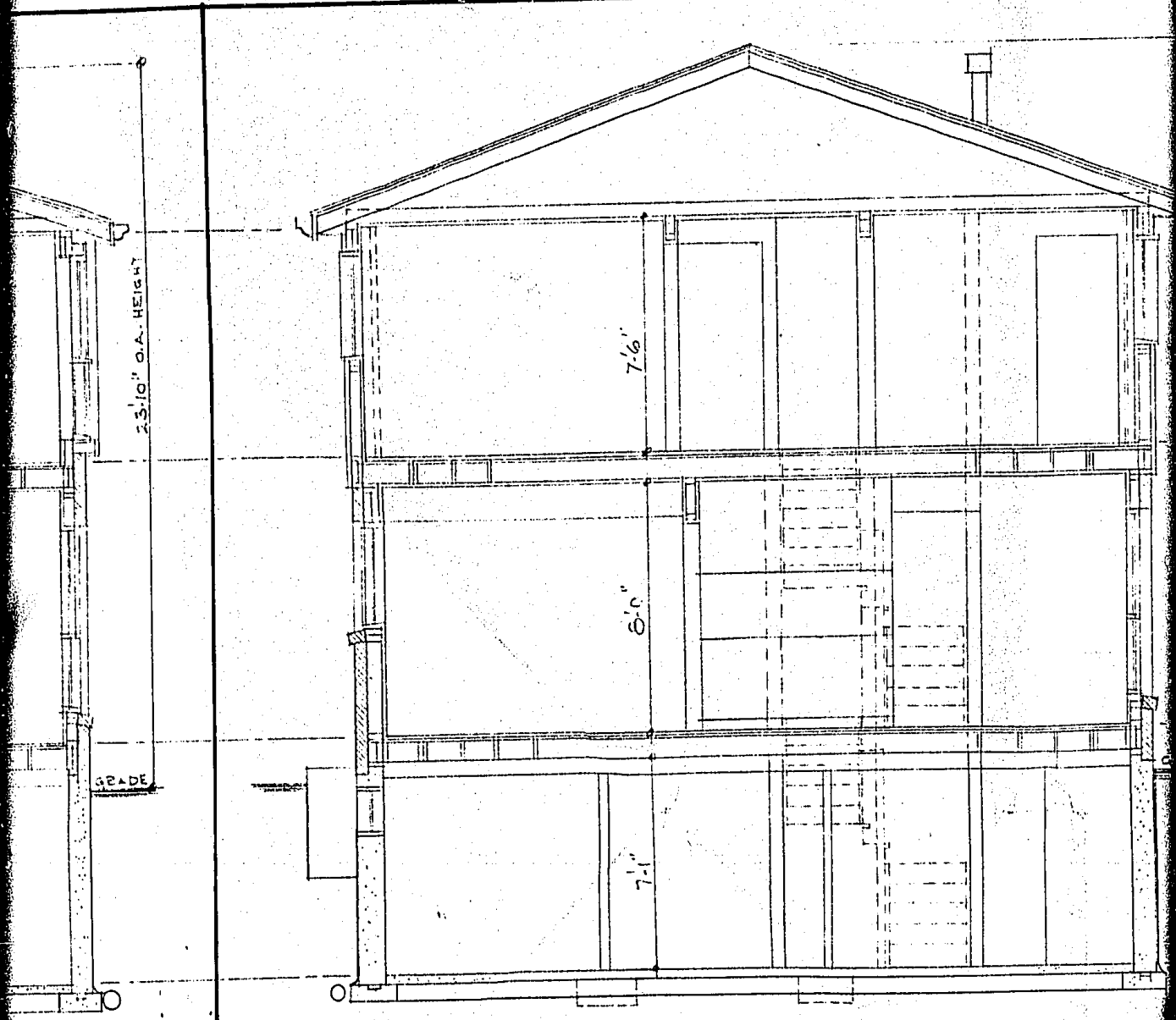
<u>UNIT NUMBER</u>	<u>PARKING PAD NUMBER</u>	<u>UNIT NUMBER</u>	<u>PARKING PAD NUMBER</u>
1	7	75	63
2	8	76	64
3	9	77	65
4	10	78	66
5	11	79	67
6	12	80	68
7	13	81	69
8	14	82	70
9	15	83	71
10	16	84	72
11	17	85	73
12	18	86	79
13	19	87	80
14	20	88	81
15	21	89	82
32	27	90	83
33	28	91	84
34	29	92	85
35	30	93	86
36	31	94	87
37	32	95	88
38	33	96	89
39	26	97	90
40	25	98	91
41	34	99	92
42	35	100	93
43	36	101	94
44	37	102	98
45	38	103	99
46	39	104	100
47	40	105	108
48	41	106	109
49	42	107	110
50	43	214	111
55	44	215	112
56	45	216	113
57	46	217	114
58	47	218	115
59	48	219	116
60	59	220	117
61	60	221	118
62	61	222	119
63	62	223	120

<u>UNIT NUMBER</u>	<u>PARKING PAD NUMBER</u>	<u>UNIT NUMBER</u>	<u>PARKING PAD NUMBER</u>
224	121	310	182
225	122	311	183
226	123	312	184
227	124	313	192
228	125	314	193
229	126	315	194
230	127	316	195
231	128	317	196
232	129	318	178
233	130	319	179
234	131	320	180
235	149	321	197
236	136	322	198
237	137	323	199
238	138	324	200
239	139	325	201
240	140	326	202
241	141	327	203
242	142	328	204
243	143	329	211
244	144	330	212
245	145	331	213
246	146	332	214
247	147	333	215
248	148	334	216
249	156	335	217
250	157	336	218
251	158	337	224
252	159	338	223
253	160	339	222
254	168	340	221
255	167	341	220
256	155	342	219
257	154	343	207
258	153	344	206
259	152	345	205
260	151	346	225
261	150	347	226
302	169	348	227
303	170		
304	171	350	266
305	172	351	265
306	173	352	264
307	176		
308	177		
309	181		

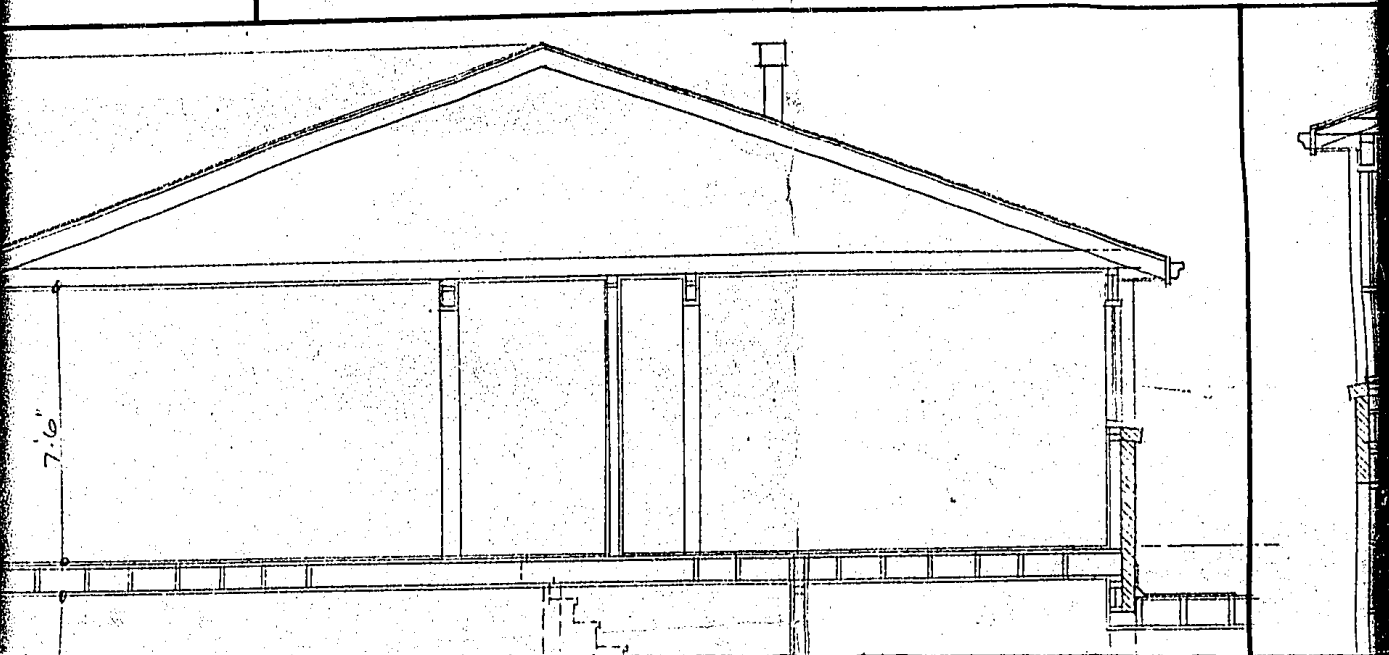


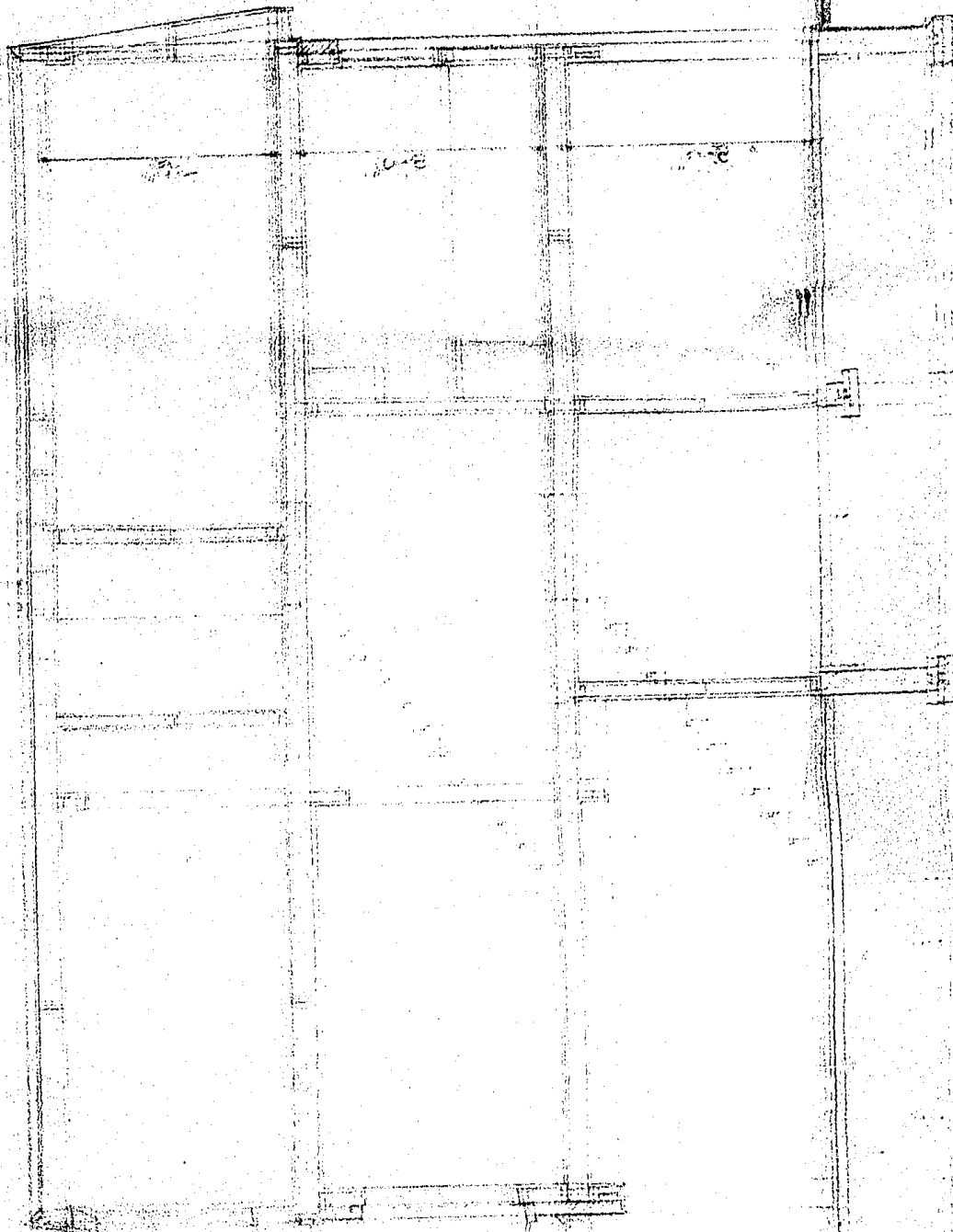
TYPE - "B"





TYPE-"C"





TYPE "D"

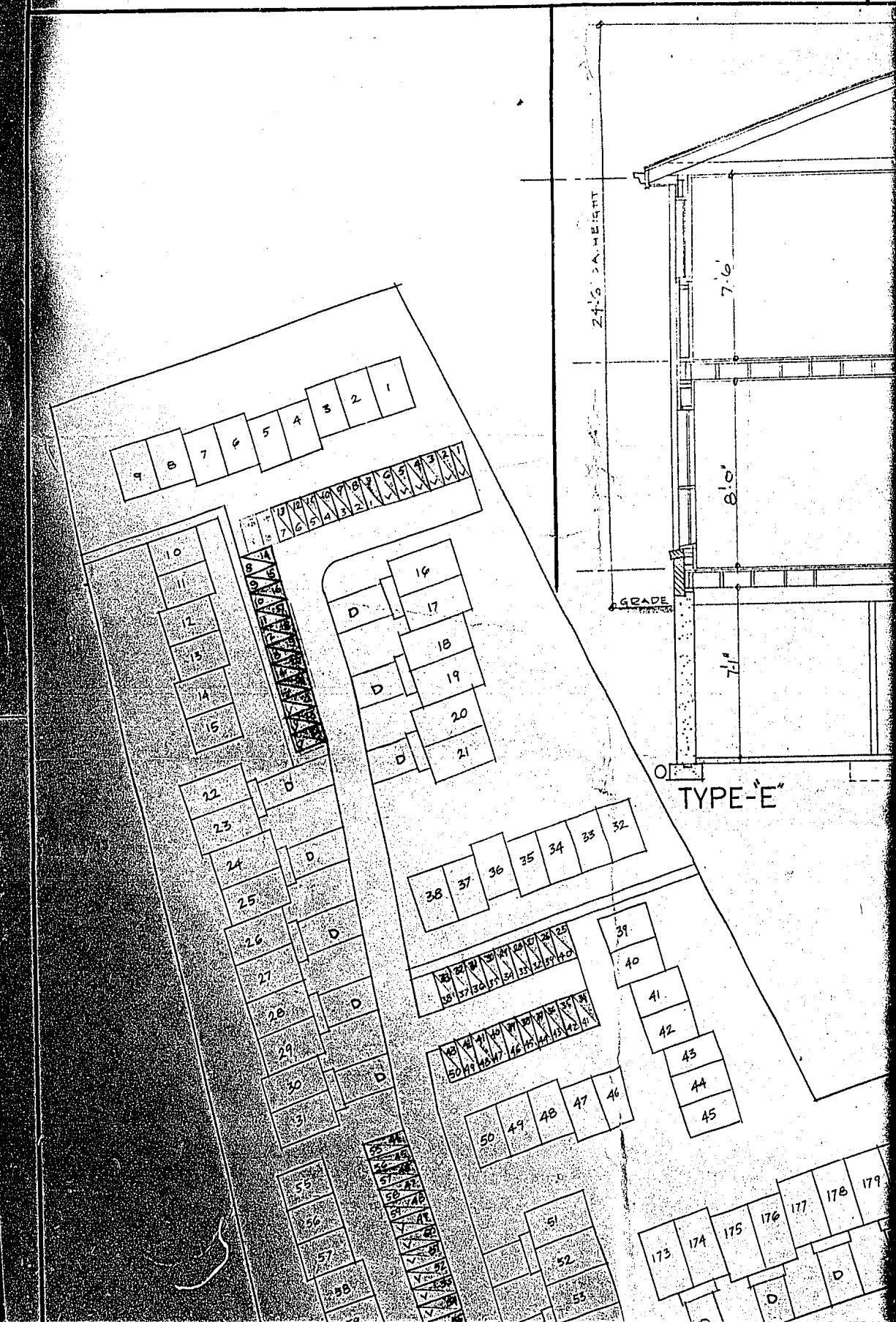
10-1

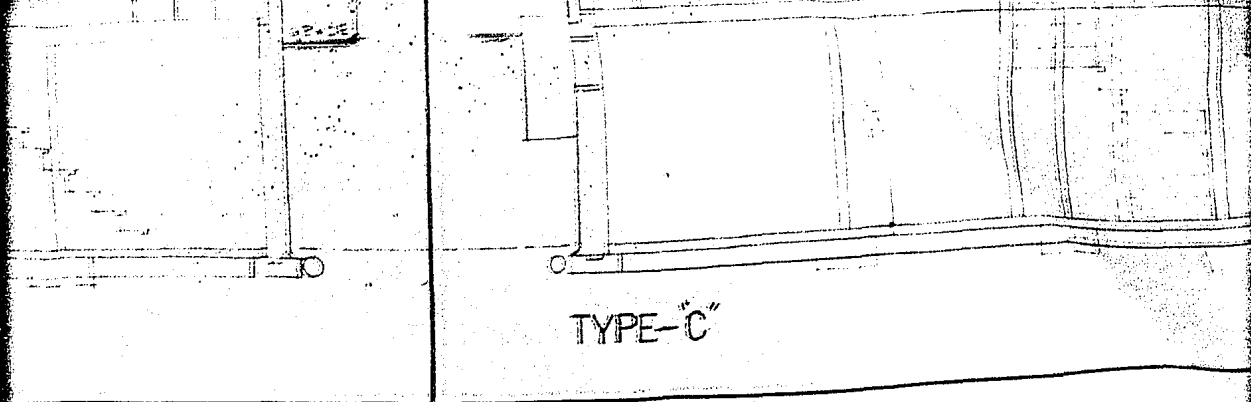
10-2

10-3

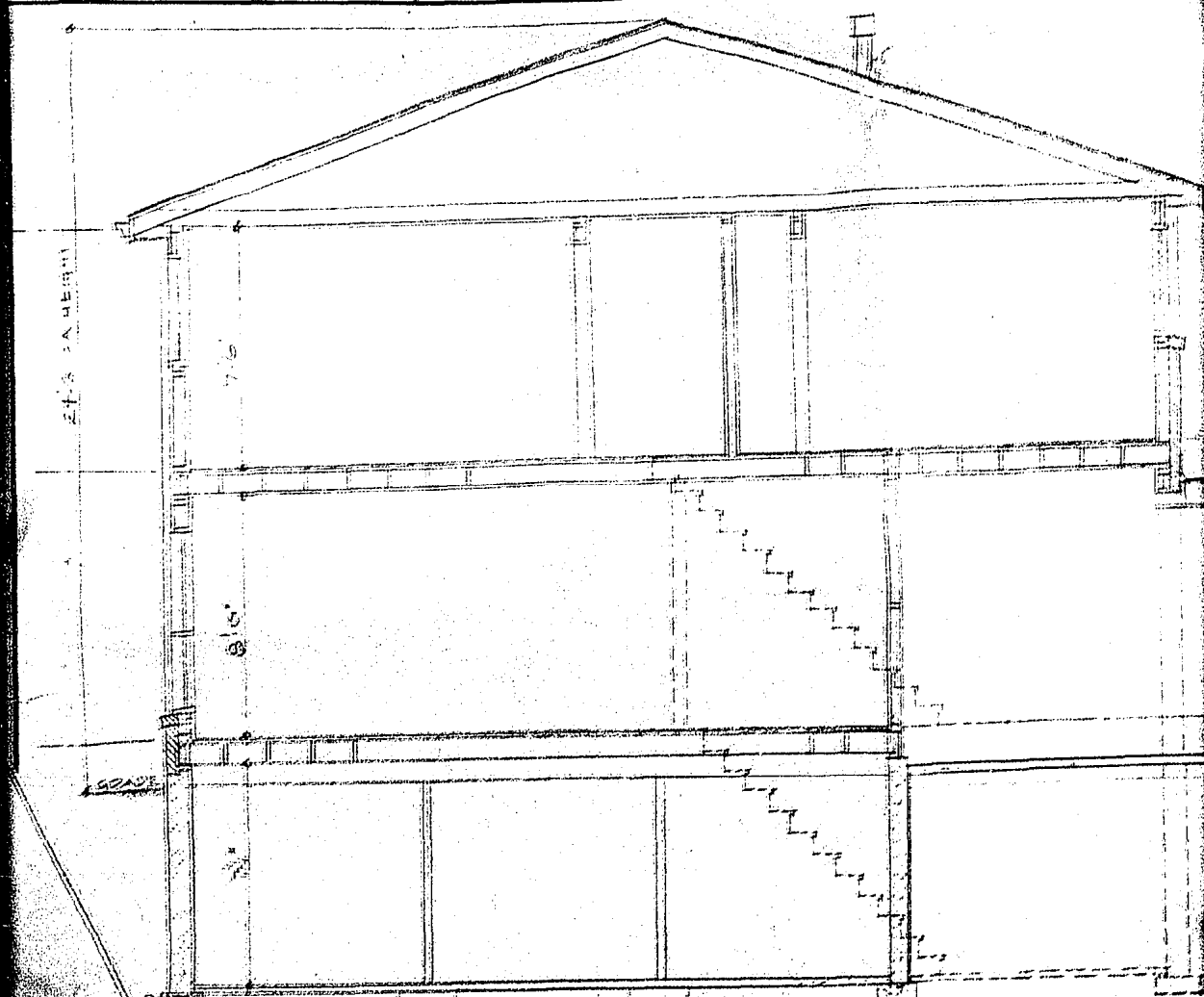


TYPE-"B"

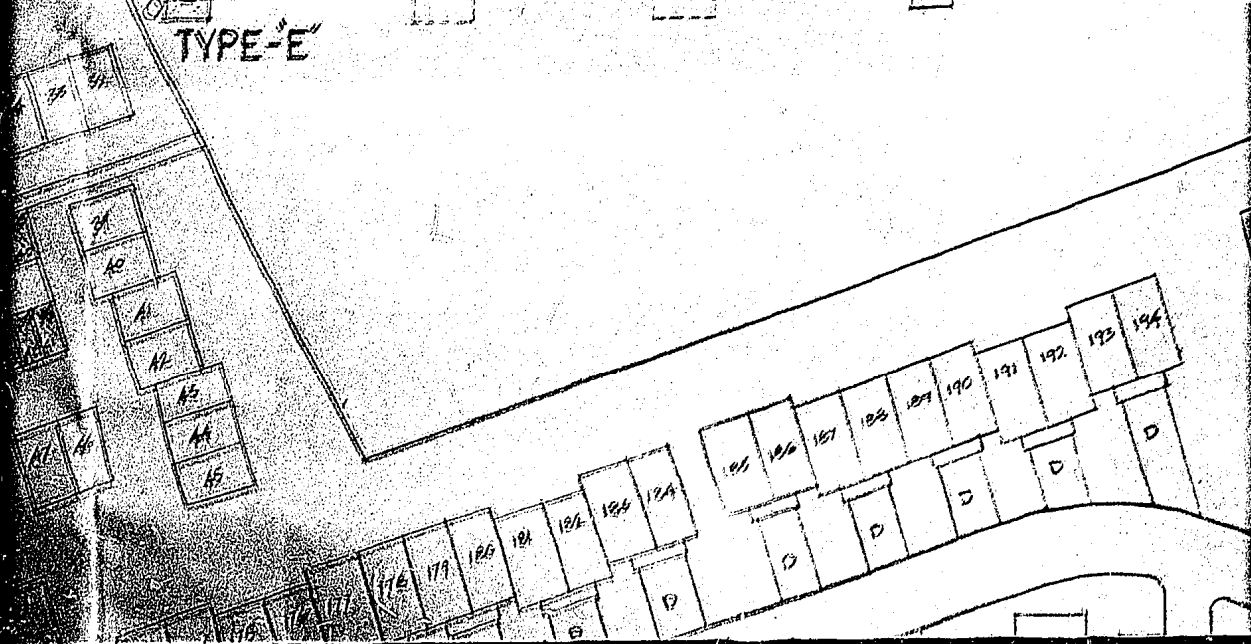


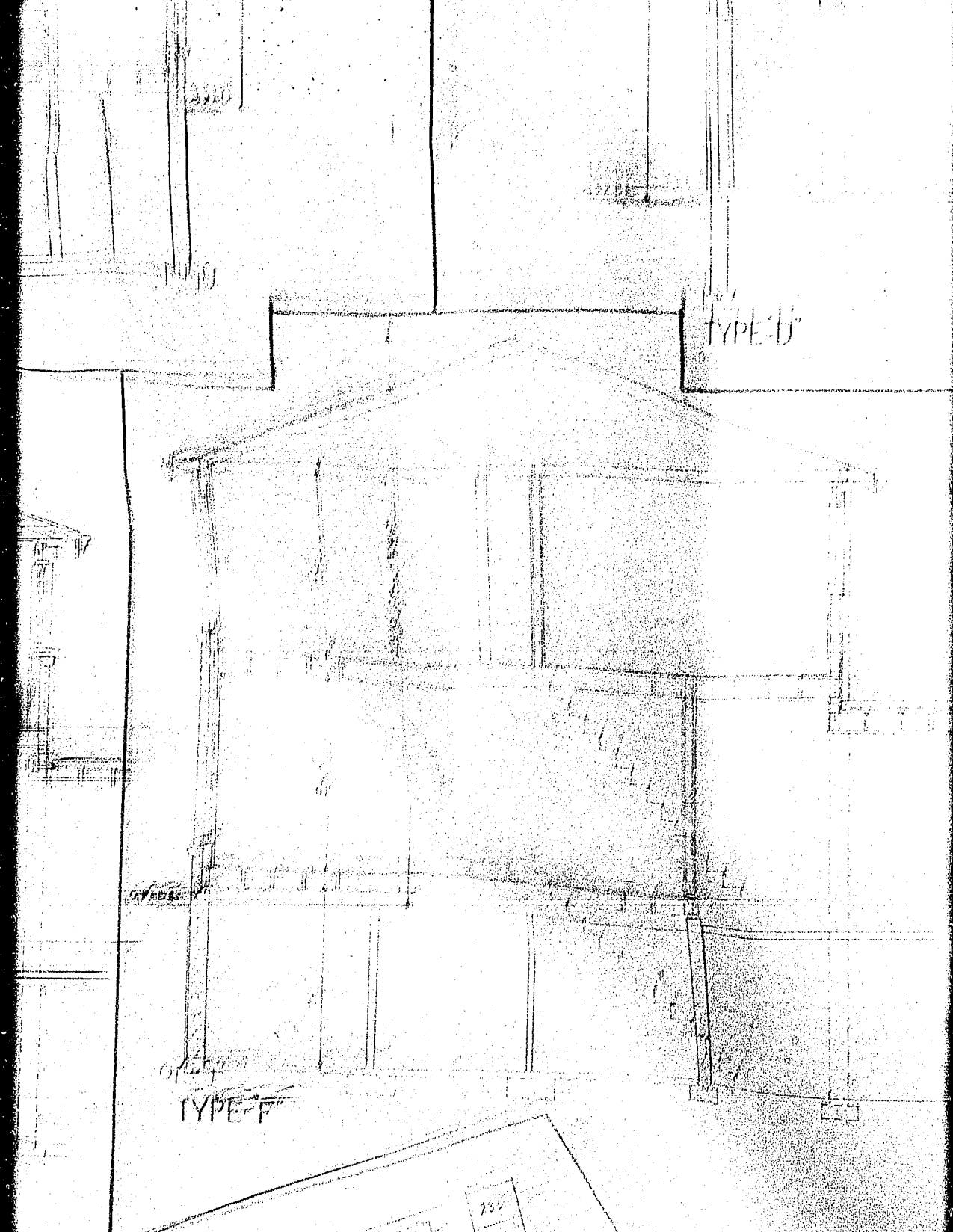


TYPE-C



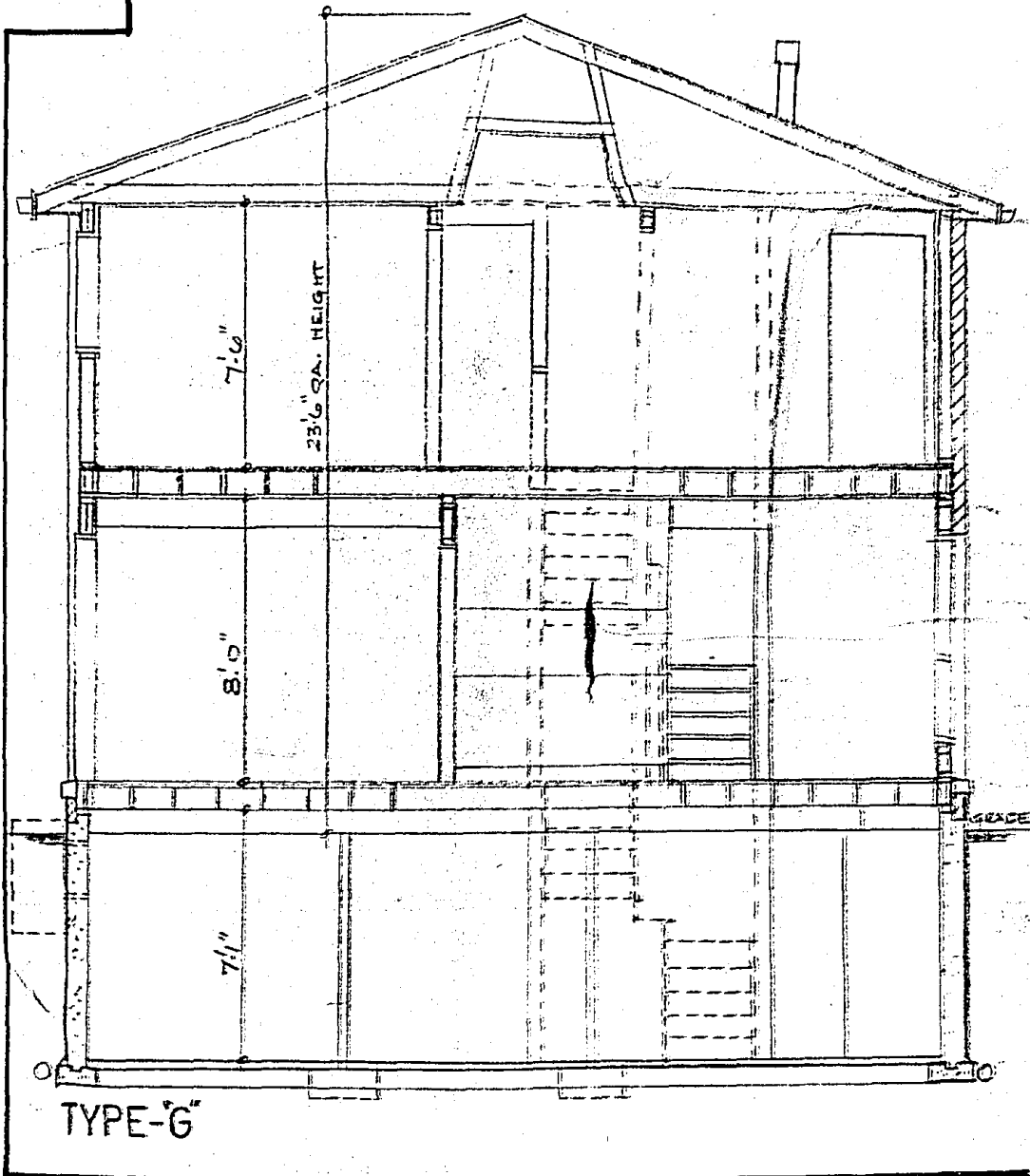
TYPE-E



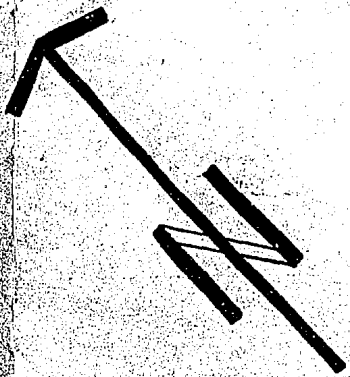


215	216	217	218	219	220	221	222	223	224	225	226	227	228	229	230	231	232	233	234	235	236	237	238	239	240	241	242	243	244	245	246	247	248	

C  
C  
A  
R  
T



BOULEVARD



DRIVEWAY LOCATIONS NOTED

PARKING PADS REVISIONS

BY MK DEL 1/11/72

RO NOV 6 1972

BY DATE

# Bramalea

Canada's first suburban city

Bramalea Construction (Peel)

Ontario

INC. TOWNHOUSES for O.H.C.

353 UNITS

BLOCK B.C.

DESIGN

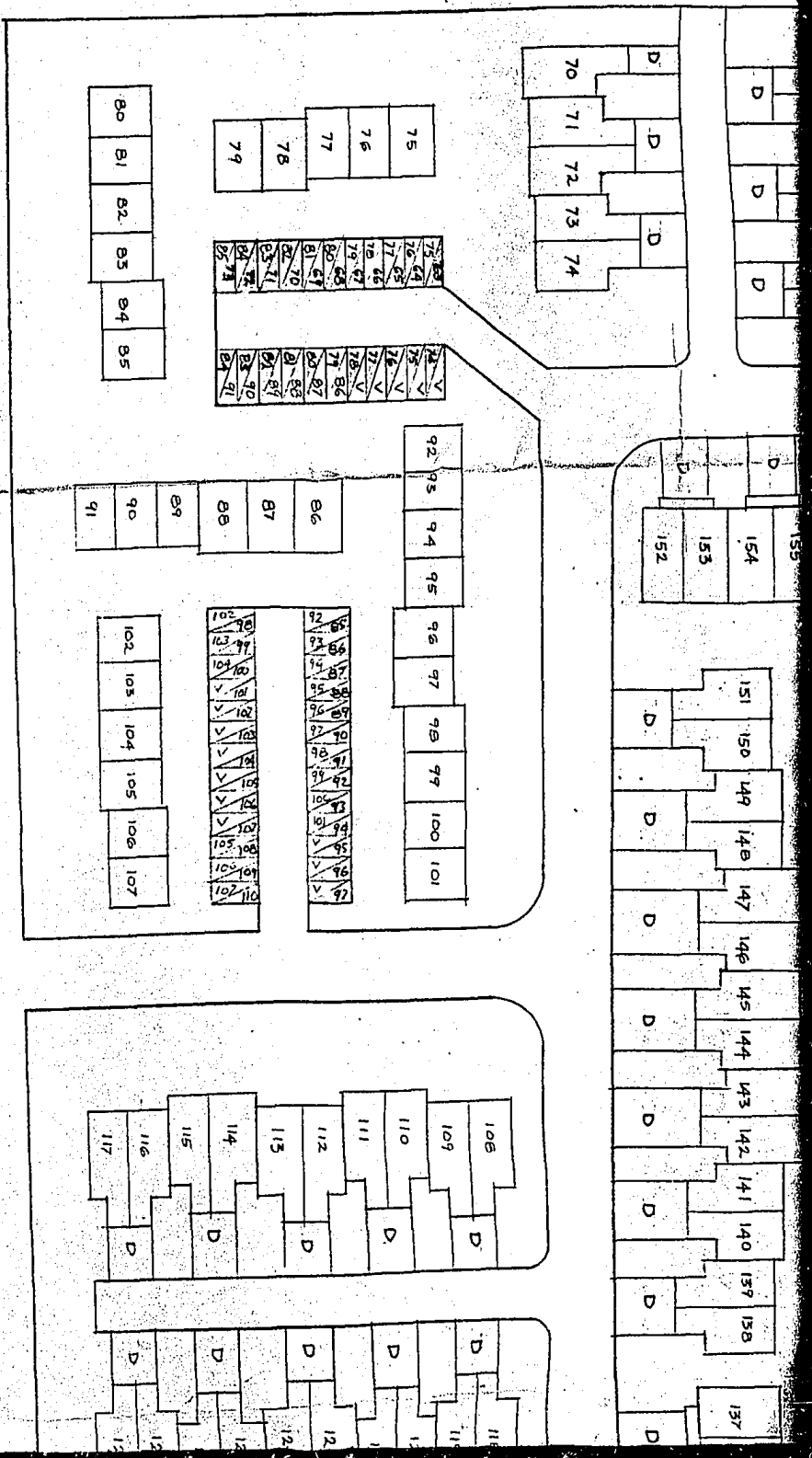
PLAN No. 819

DRAWN RO

DATE Sept. 5, 1972

SCALE

# SCHEDULE 'B'

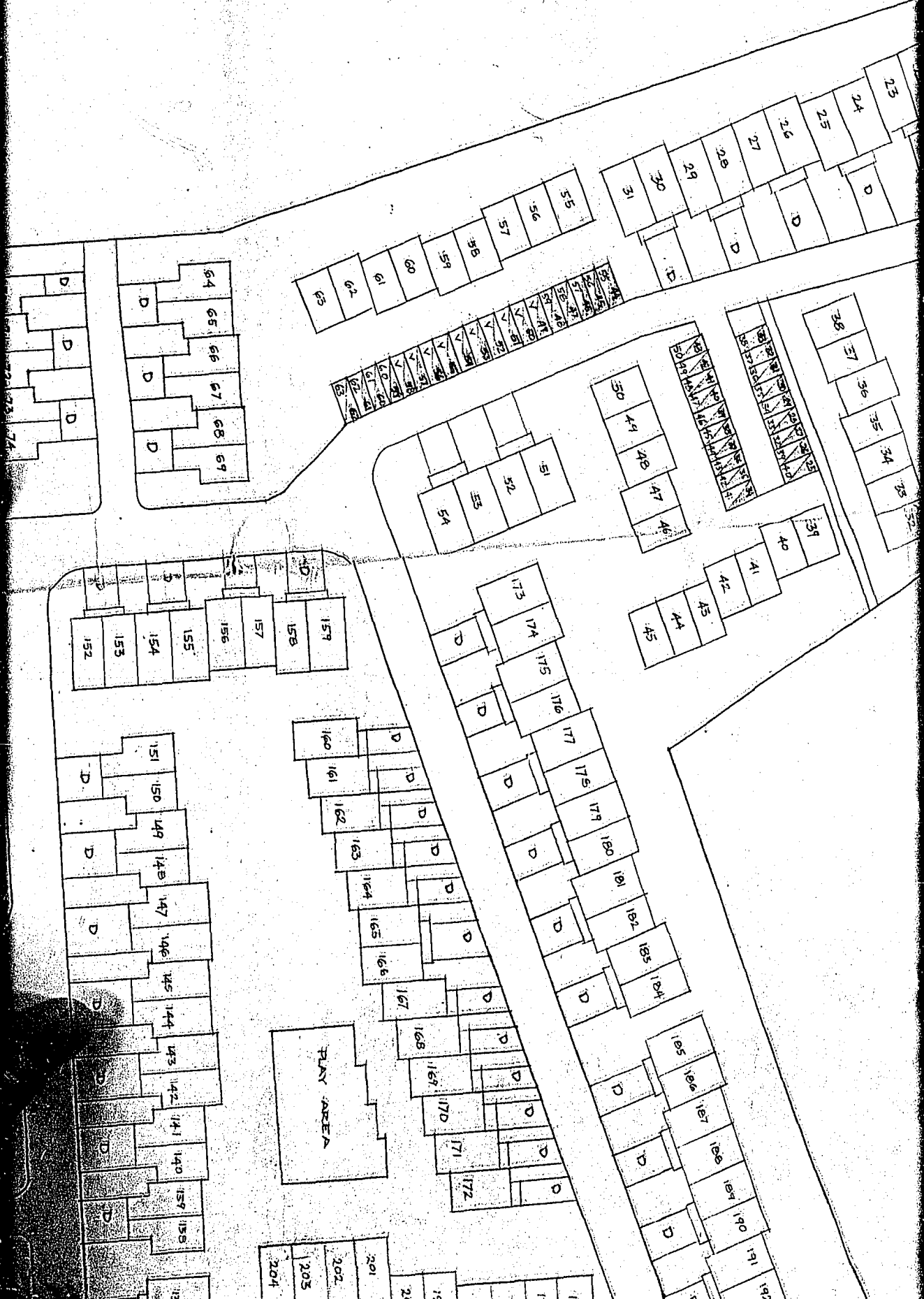


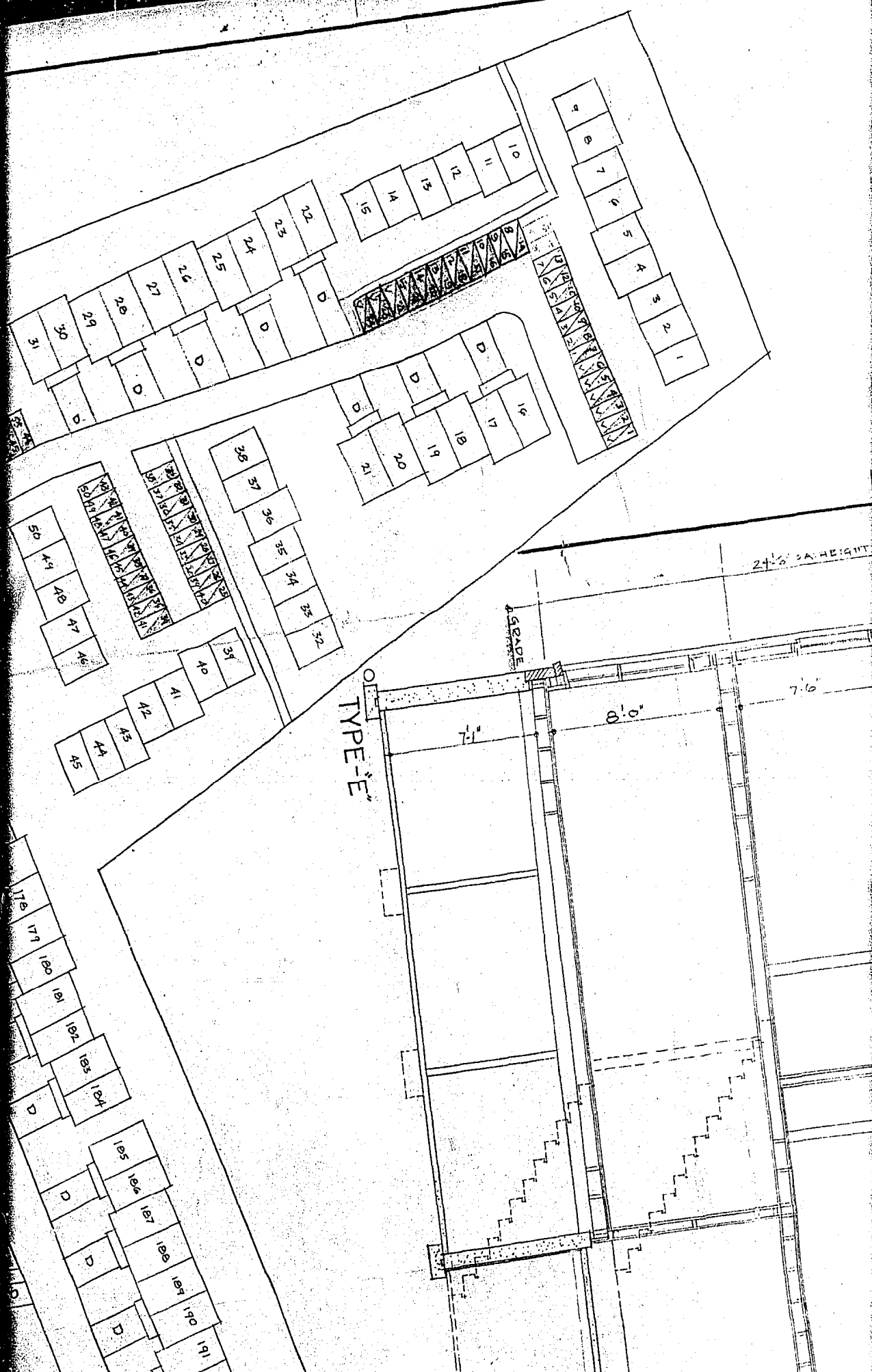
## LEGEND

322 UNIT NUMBER  
 PARKING PAD NUMBER  
 UNIT NUMBER  
 VISITOR PARKING  
 'D' - DENOTES DRIVEWAYS FOR EXCLUSIVE USE OF TENANTS

BRAMALLEA

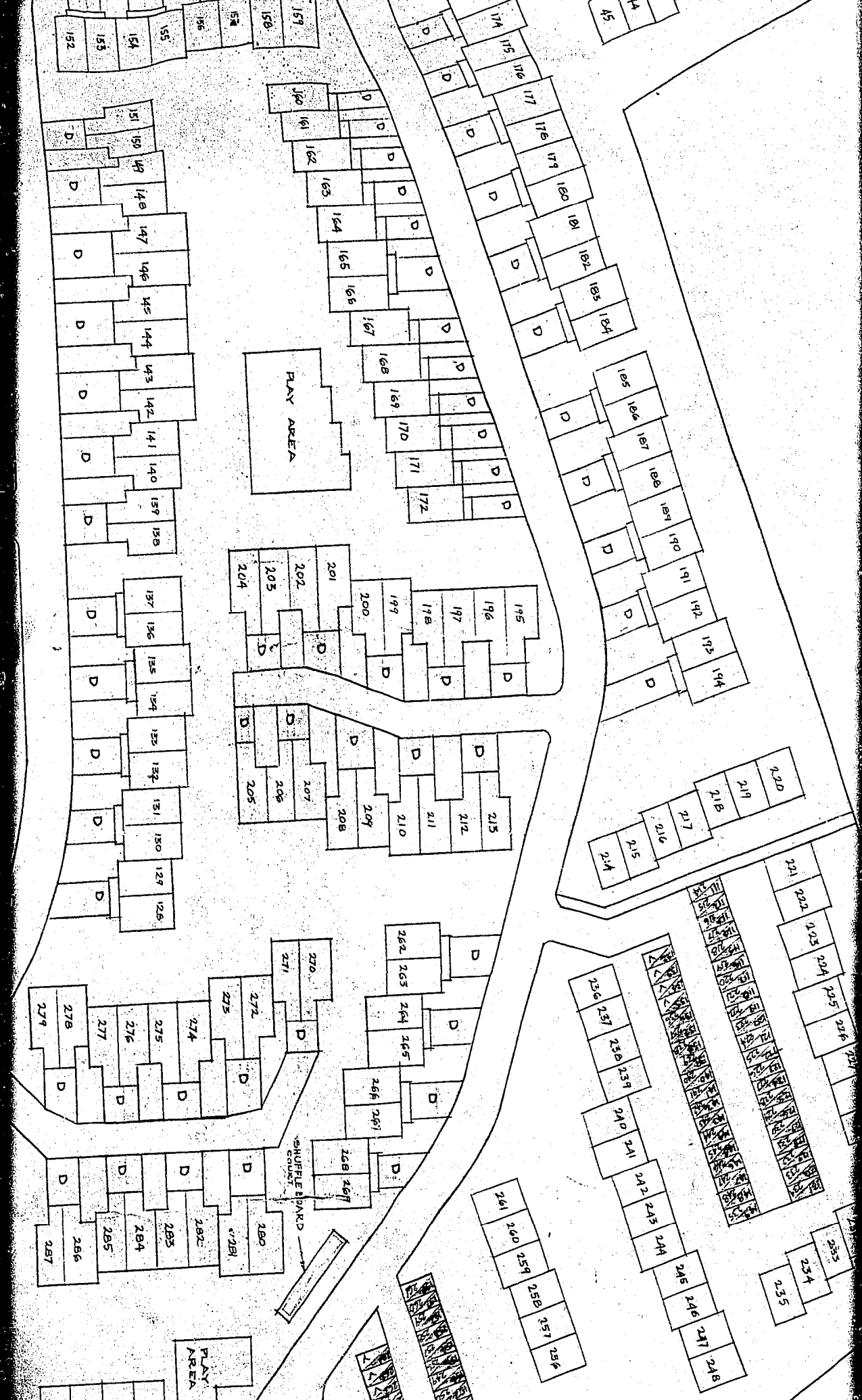




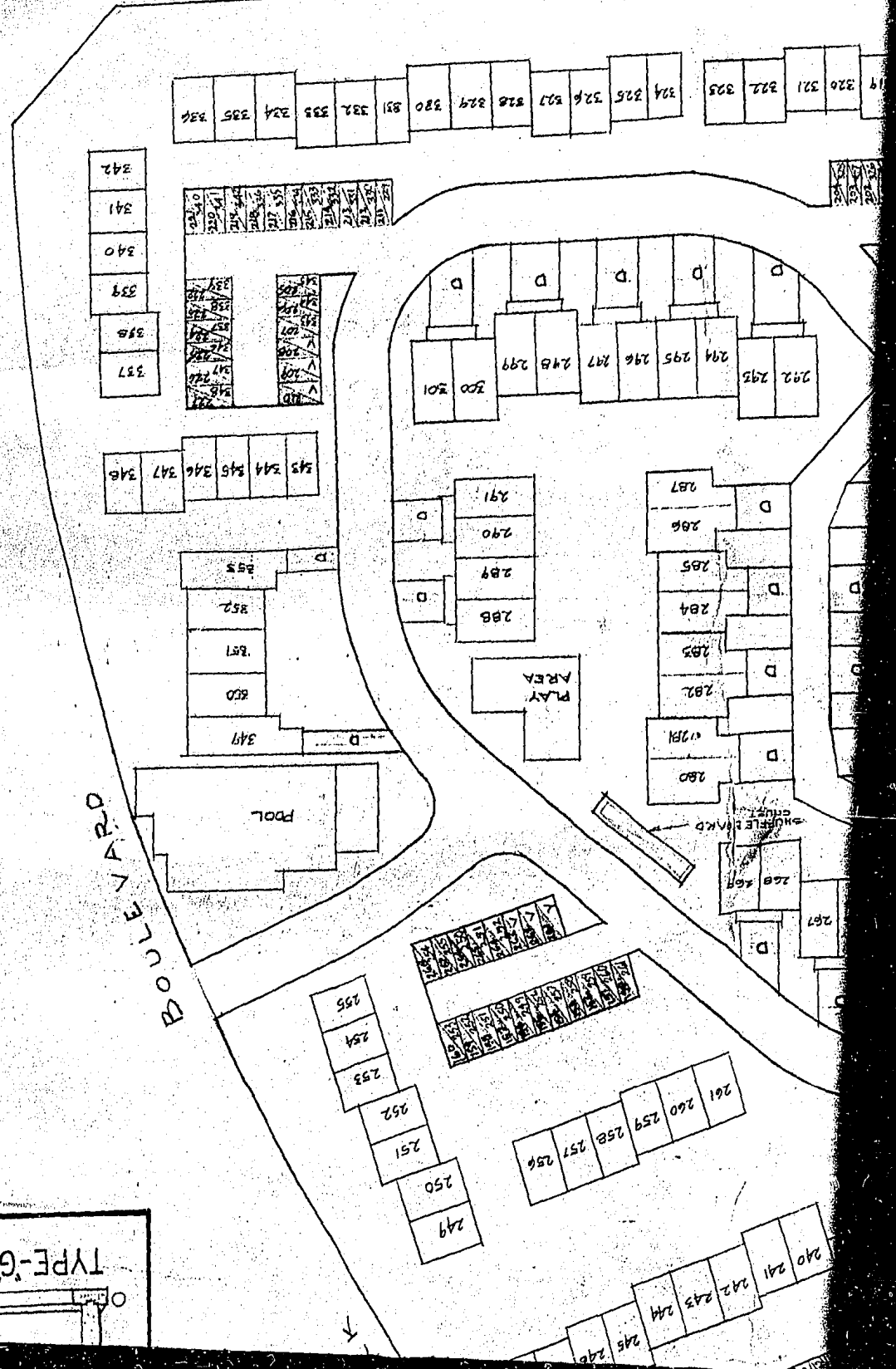






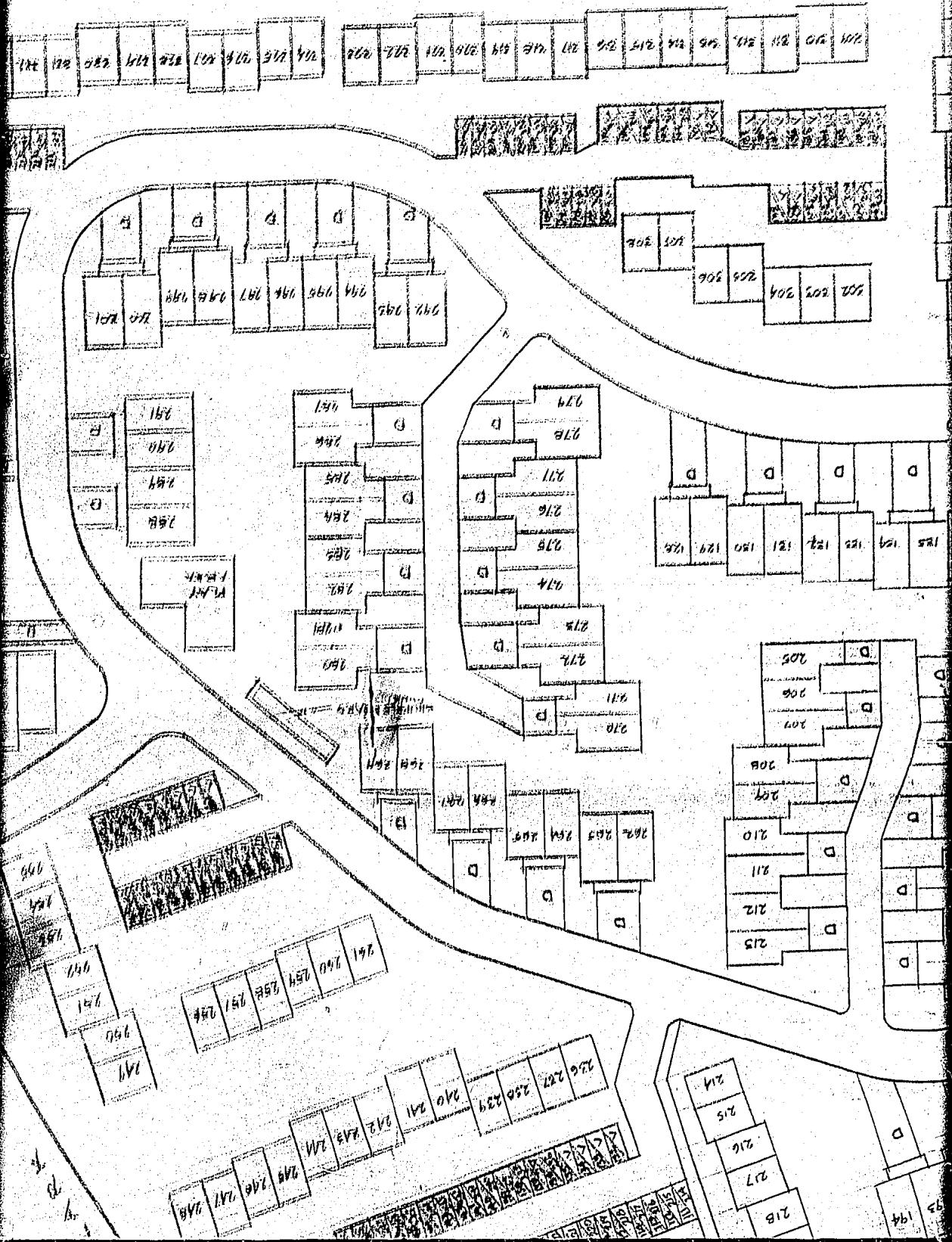


DATE: 5/9  
 DRAWN:  
 DESIGN:  
 353  
 Mr. T  
 Brain  
 H  
 REVIEW  
 PARK  
 DRIVE

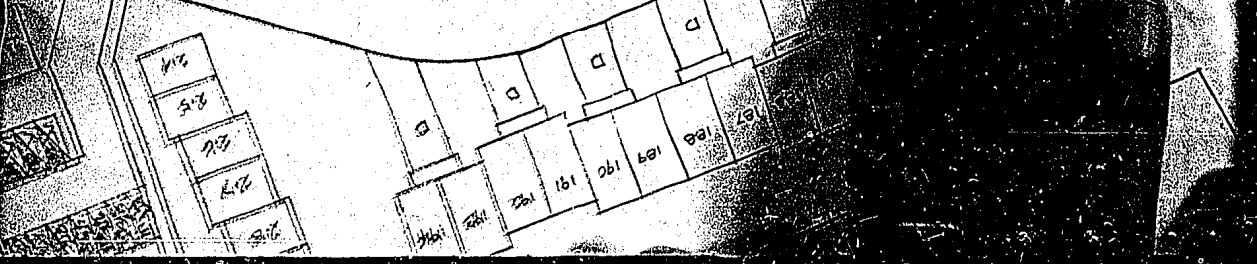
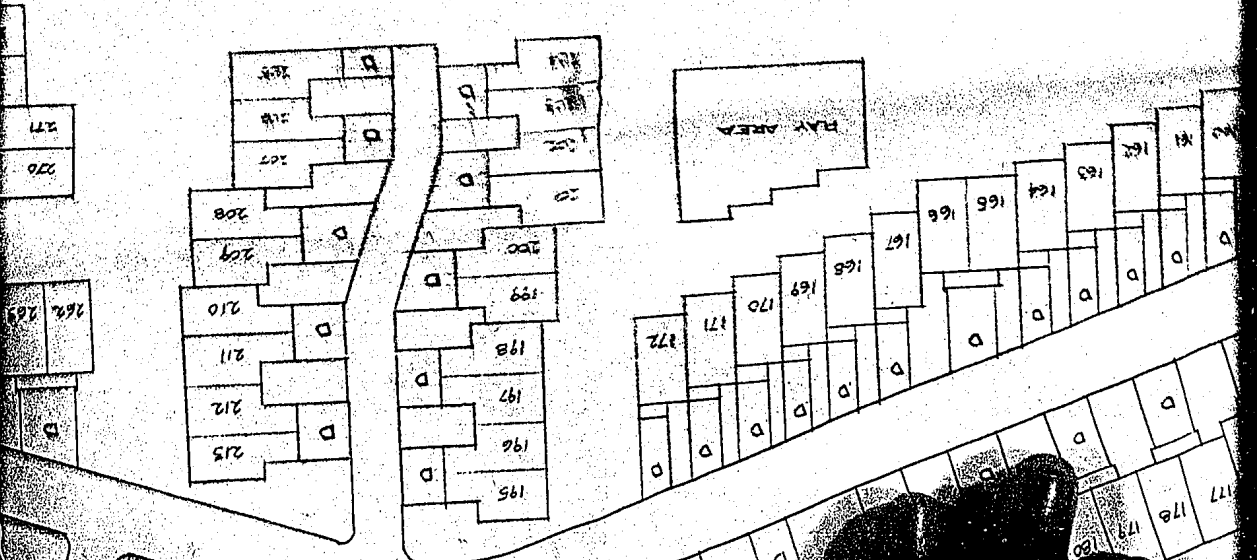
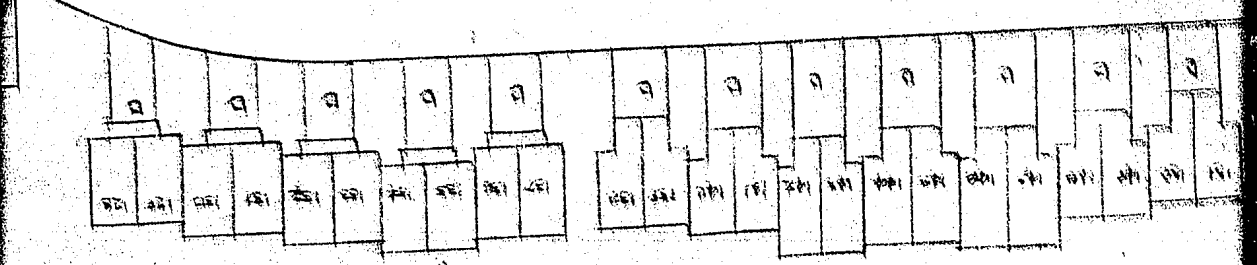
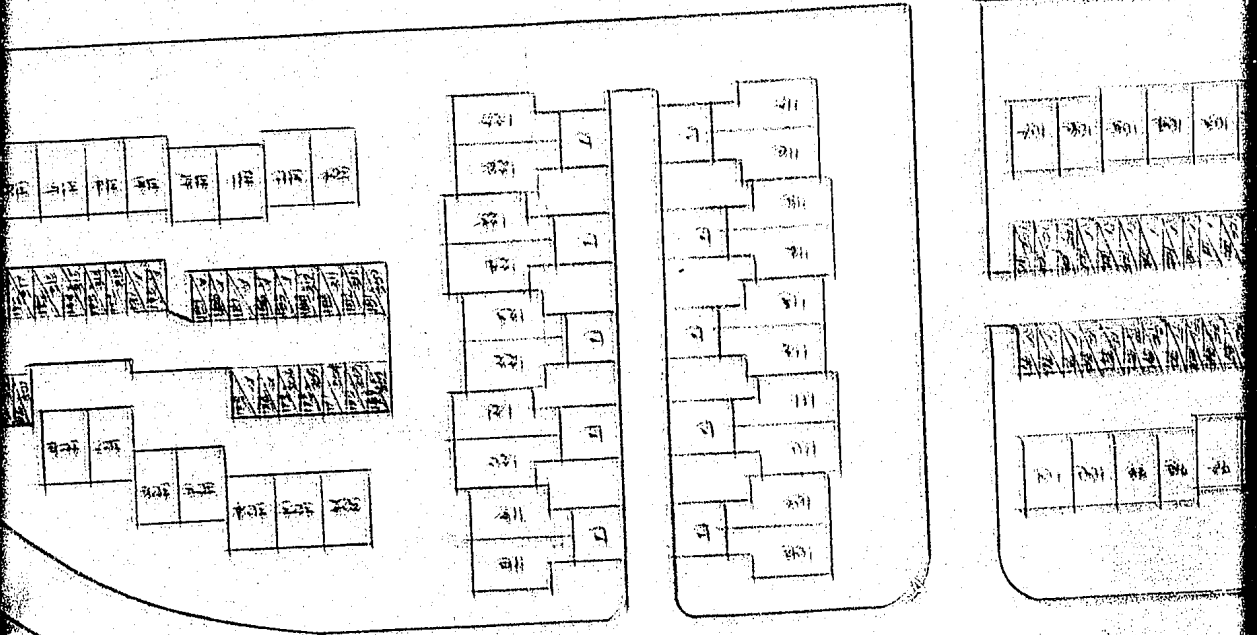


TYPE-G

207D



BRAMALFA ROAD



WALKERS 917

DRIVE

819

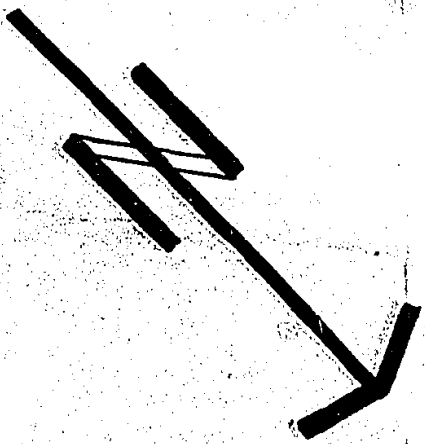
TOWNHOUSES TO THE BACK

Bremble

CONCRETE WORK

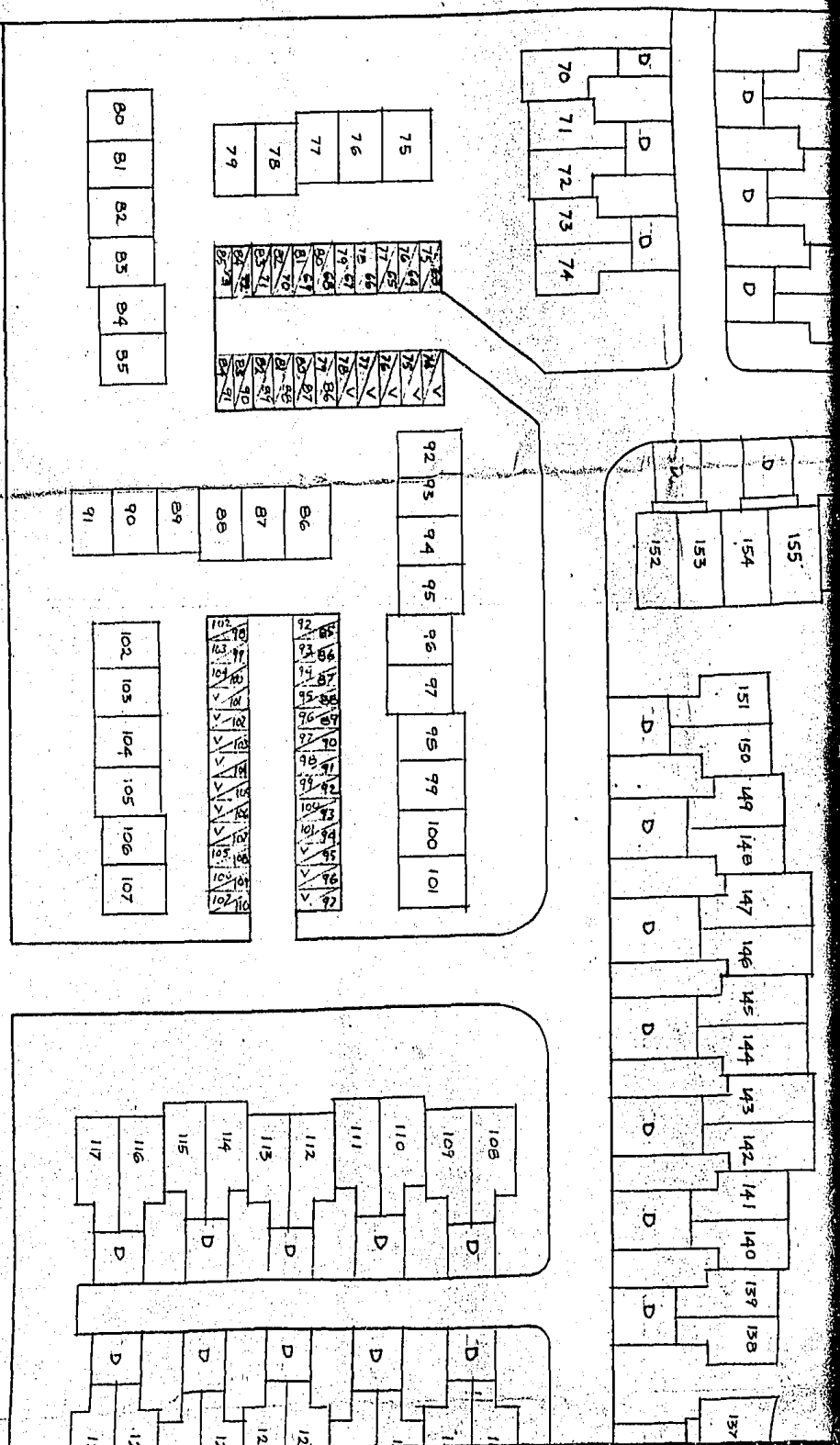
100  
101  
102  
103  
104  
105  
106  
107  
108  
109  
110  
111  
112  
113  
114  
115  
116  
117  
118  
119  
120

342
341
340
339
338
337
347
346



BOULEVARD

SCHEDULE 'B'

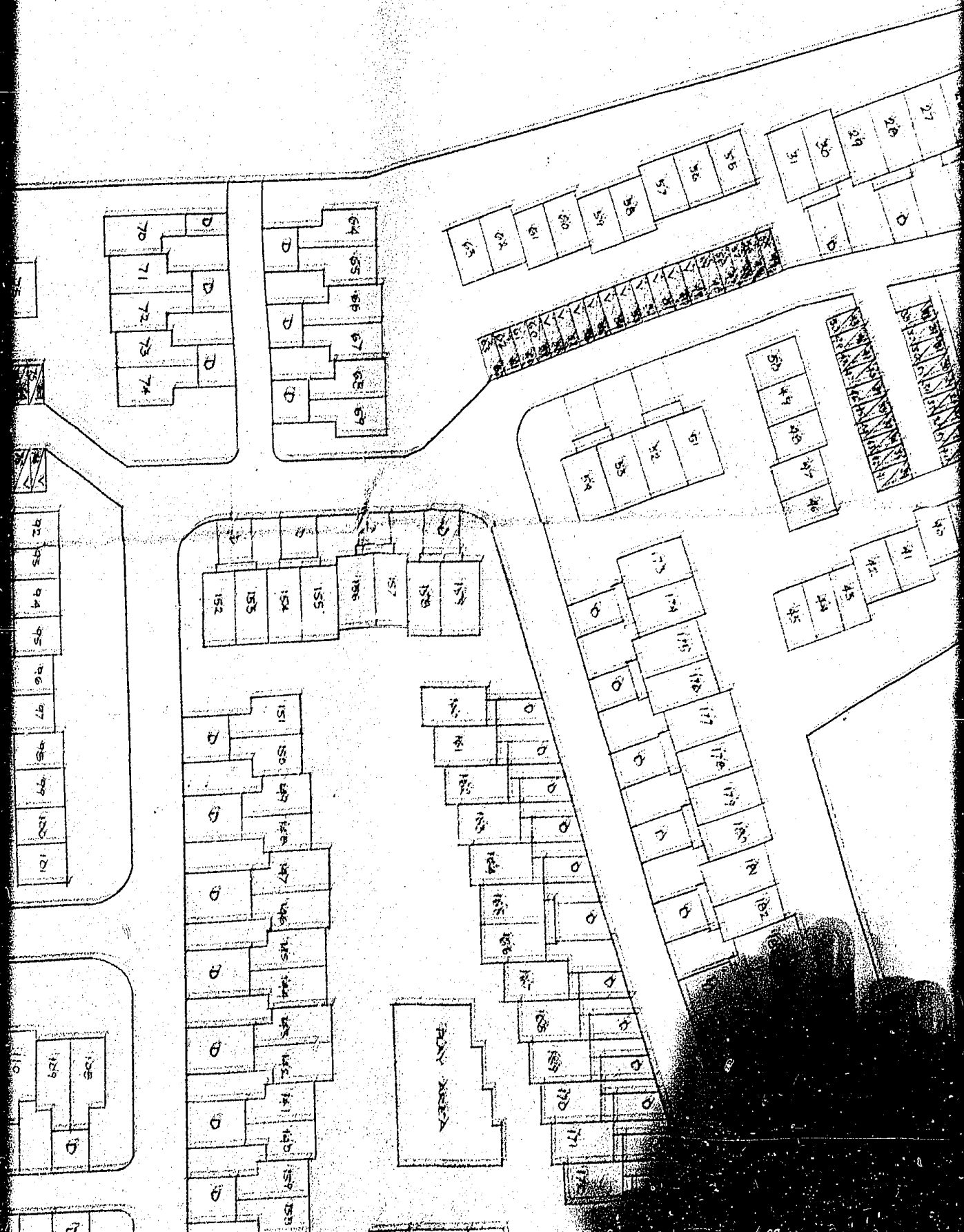


LEGEND

UNIT NUMBER  
 322  
 PARKING PAD NUMBER  
 UNIT NUMBER  
 322  
 D - DENOTES DRIVEWAYS FOR EXCLUSIVE USE OF TENANTS

BRAMALEA





76

70  
71  
72  
73  
74

64  
65  
66  
67  
68  
69

59  
58  
57  
56  
55  
54  
53

27  
28  
29  
30  
31

82  
83  
84  
85  
86  
87  
88  
89  
90

152  
153  
154  
155  
156  
157  
158  
159

40  
41  
42  
43  
44  
45  
46  
47  
48  
49

51  
52  
53  
54

173  
174  
175  
176  
177  
178  
179  
180  
181  
182

40  
41  
42  
43  
44  
45

151  
150  
149  
148  
147  
146  
145  
144  
143  
142  
141  
140  
139  
138  
137  
136  
135  
134  
133  
132  
131  
130  
129  
128  
127  
126  
125  
124  
123  
122  
121  
120  
119  
118  
117  
116  
115  
114  
113  
112  
111  
110  
109  
108  
107  
106  
105  
104  
103  
102  
101  
100  
99  
98  
97  
96  
95  
94  
93  
92  
91  
90  
89  
88  
87  
86  
85  
84  
83  
82  
81  
80  
79  
78  
77  
76  
75  
74  
73  
72  
71  
70  
69  
68  
67  
66  
65  
64  
63  
62  
61  
60  
59  
58  
57  
56  
55  
54  
53  
52  
51  
50  
49  
48  
47  
46  
45  
44  
43  
42  
41  
40  
39  
38  
37  
36  
35  
34  
33  
32  
31  
30  
29  
28  
27  
26  
25  
24  
23  
22  
21  
20

PLAZA

128  
129

127